



PRAGATI

ENGINEERING COLLEGE

(Autonomous)

(Approved by AICTE, New Delhi, Permanently Affiliated to JNTUK, KKD,
Accredited by NBA & Accredited by NAAC with 'A' Grade)
Recognized by UGC under sections 2 (f) & 12 (b) of the UGC act, 1956
ADB Road, SURAMPALEM, Nr. Peddapuram, E.G. Dist.

www.pragati.ac.in

Tender Notice No. 1/2022 Dated : 03-06-2022

Sealed Bidding documents are invited for participation in the competitive bidding process for the following works :

1. Construction of Building for Common Facility Centre to DST Project.
2. Construction of Cemented Tanks - 10 Nos.
3. Open Receway Ponds - 2 Nos.

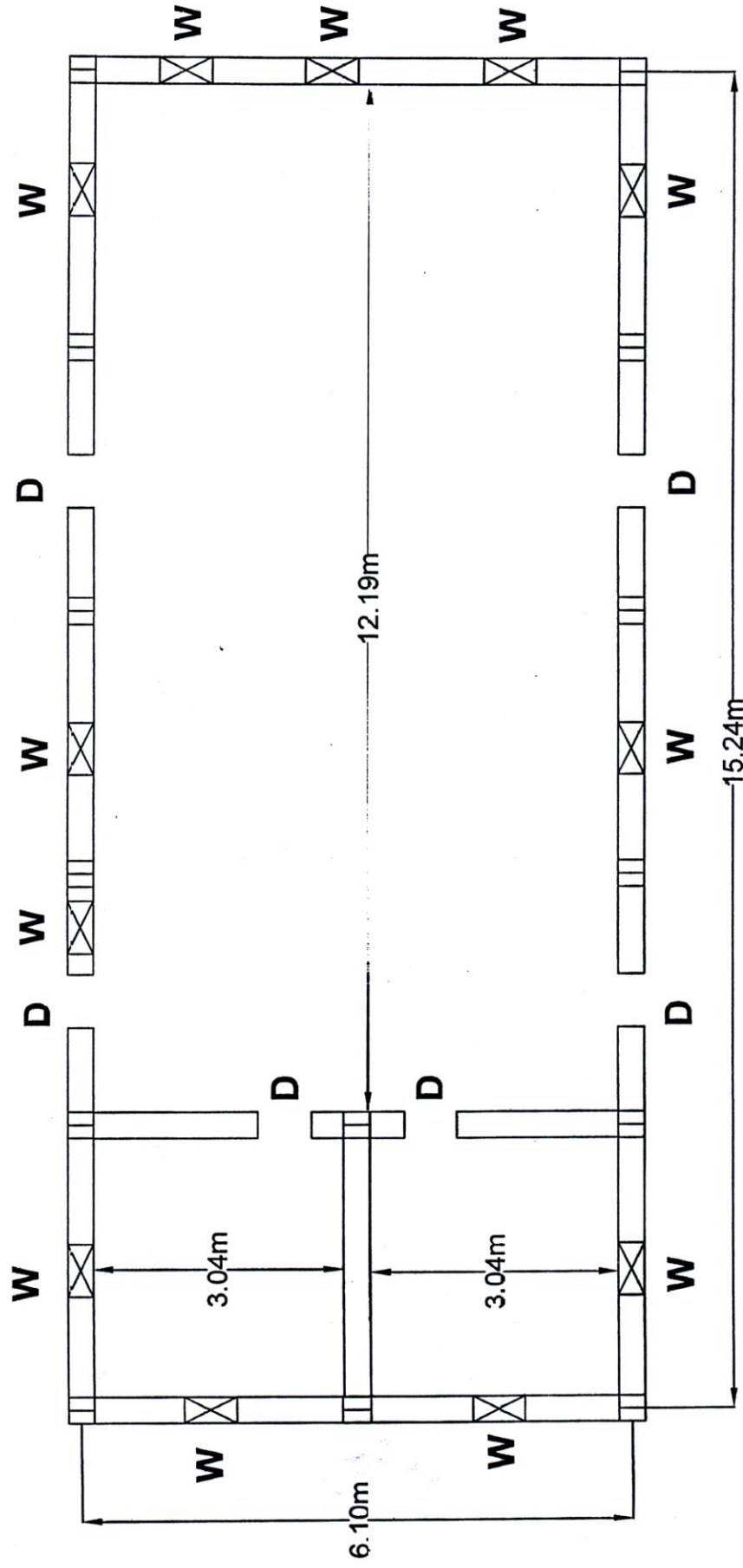
The details can be downloaded from the college website :
www.pragati.ac.in

Sealed Bidding documents should reach this office on or before **11-06-2022** before **3 p.m.**

The college authorities reserve the right to accept or reject any or all bids without assigning any reason whatsoever.

Date : 03-06-2022

Sd/- **PRINCIPAL**



**COMMON FACILITY CENTER
PLAN**

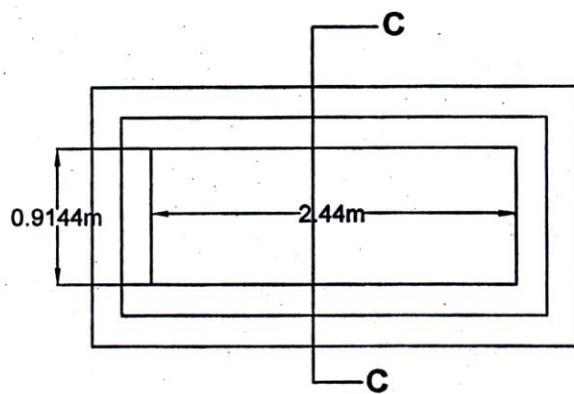
NAME OF THE WORK: Construction of common facility centre						
SI No.	Description Item	No.	Measurements			Quantity
			Length	Breadth	Depth	
1	2	3	4	5	6	7
1	Earth work excavation and depositing the soil on banks with an initial lead of 10m and initial lift of 2m in loamy and clay soils like BC soils, red earth and ordinary gravel SS 20B including shoring, strutting, sheeting, planking and dewatering cost of hire charges of T&P labour charges etc. complete for finished item of work for foundation of building (APSS NO.308).					
	Footings L/S & R/S row	14	2.30	2.30	1.73	128.12cum
2	Filling with sand in trenches, sides of foundations and basement with initial lead in layers not exceeding 15 cm thick, consolidating each deposited layer by watering and ramming including cost and conveyance of water to work site and all operational, incidental, labour charges, hire charges of T & P etc., complete for finished item of work. (APSS NO. 309 & 310).					
	Footings	14	1.7	1.85	0.6	26.42cum
		14	1.92	2.07	0.6	33.38cum
3	Plain Cement Concrete corresponding to M 7.5 grade as per IS 456 equivalent to (1:4:8:) proportion nominal mix (cement: fine aggregate: Coarse aggregate) using 40mm size HBG (SS5) metal from approved quarry with concrete mixture including cost and conveyance of all materials like cement, sand (unscreened), coarse aggregate, water etc. to site, including seignior age charges, sales & other taxes on all materials, all operational, incidental, and labour charges such as mixing, laying and ramming concrete in layers in position not exceeding 15cm, finishing top surface, curing concrete, etc., complete for finished item of work for Foundations and Flooring Bed (APSS No. 402).					
	for footings	14	2.30	2.30	0.15	11.11cum
	Under PB	1	51.88	0.30	0.10	1.56cum
						12.67cum
4	RCC M- 20 Nominal mix (Cement: fine aggregate: coarse aggregate) corresponding to Table 9 of IS 456 using 20mm size graded machine crushed hard granite metal (coarse aggregate) from approved quarry including cost and conveyance of all materials like cement, fine					

	aggregate (sand) coarse aggregate, water etc., to site and including Seigniorage charges, sales & other taxes on all materials including all operational, incidental and labour charges such as machine mixing, laying concrete, curing etc., complete but excluding cost of steel and its fabrication charges for finished item of work, but excluding centering, shuttering.					
	for footings	14	2.0	2.0	0.3	16.80cum
5	-do-for Pedestals	14	0.45	0.6	0.6	2.268cum
6	-do-for Columns at Ground Floor	14	0.23	0.38	0.60	0.734cum
7	-do-for Plinth beams					
	Long Walls	1	51.88	0.23	0.38	4.53cum
	For Damp proof beam	1	51.88	0.23	0.15	1.79cum
8	-do-for Columns at Ground Floor					
	Columns upto slab level	14	0.23	0.38	3.65	4.47cum
9	Lintel level beam					
	Lintel level beams	1	51.88	0.23	0.23	2.74cum
10.	Providing high yield strength deformed (HYSD) steel TMT bars (Fe 500 grade), cutting, bending, to required sizes and shapes placing in position with cover blocks and binding wire of 20SWG, forming grills for reinforcement work as per approved designs and drawings including cost and conveyance of bars, binding wire, wastage, tying etc for finished item of work.					
	for Beams & Columns =80Kg/cum	1				2523Kg
11	Brick masonry 230 mm thick for panel walls in superstructure with CM (1:6) proportion using II nd class country bricks of size 23x11x7 cm from approved source having crushing strength not less than 35kg/sqcm including cost and conveyance of, all materials like cement, sand, bricks, water etc., to site, including seigniorage charges, sales and other taxes on all materials and all operational, incidental and labour charges					

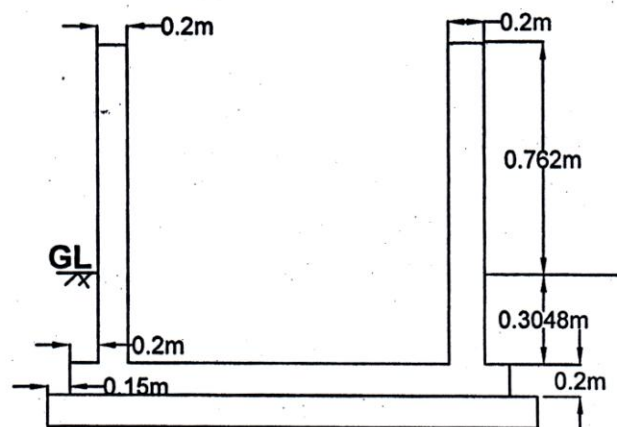
	such as mixing cement mortar, curing scaffolding charges, constructing masonry, lift charges, curing etc., complete for finished item of work.					
	Basement walls	1	51.88	0.23	0.6	7.16
	cross walls					
	deduct columns(-)	14	0.23	0.38	0.6	-0.73
	Walls					
	entrance steps	1	1.8	1.5	0.23	0.621
	entrance steps	1	1.8	1.20	0.15	0.325
	entrance steps	1	1.8	0.9	0.15	0.243
	entrance steps	1	1.8	0.6	0.15	0.162
	entrance steps	1	1.8	0.3	0.15	0.081
						7.86cum
12	Brick masonry 230 mm thick for panel walls in superstructure with CM (1:8) proportion using II nd class bricks of size 23x11x7 cm from approved source having crushing strength not less than 35kg/sqm including cost and conveyance of all materials like cement, fine sand (unscreened), bricks, water etc., to site, including seignorage charges, sales and other taxes on all materials and all operational, incidental and labour charges such as mixing cement mortar, curing scaffolding charges, constructing masonry, lift charges, curing etc., complete for finished item of work complete.					
	super structure upto truss					
	Walls	1	51.88	0.23	3.60	42.96
	deductions: Door	6	0.9	2.10	0.23	-2.65
	Deductions: windows	12	1.5	1.35	0.23	-5.59
						34.76cum
13	Sunshades of 0.60 m width 75 mm at fixed end and 50 mm at free end -					
	Over windows	12	2.1	0.6		15.12
	Over doors	3	1.5	0.6		2.70
						17.82sqm

14	Plastering 12 mm thick in CM (1:5) including cost and conveyance of all materials and all labour charges etc., complete					
	Inside	1	51.88		3.65	189.36
	Partition walls	1	9.2		3.65	33.58
	Outside:	1	42.68		3.65	155.78
	Deduction for doors(-)	6	0.9		2.10	-11.34
	Deduction for windows(-)	12	1.5		1.35	-24.30
	Basement Walls	1	42.68		0.6	25.61
	Entrance Steps	4	1.8		0.3	2.00
						370.69sqm
15	Flooring with 100 mm thick CC (1:6:10) mix using 40mm HG metal, 100mm thick and 20mm cement concrete surface (Ellies pattern, first sort) per 10Sqm of area including all labour charges etc., complete.					
		1	6.1	15.24		92.96sqm
16	Supply and fixing of Sal wood framed Flush shutter Door of size 1.20 x 2.10 mt. with double. Flush shutters as per approved of 30 mm thick solid bond wood block board type with teak veneer on one face and commercial ply on another face (One side Teak) teak wood internal lipping including fixing of MS Z hold fasts, MS butt hinges, MS towerbolts, Aldrops - 300 mm long, MS Door handles & door stopper including fixing the fixtures to door with required no. of screws, bolts and nuts including labour charges for fixing the frame in position, fixing the shutter to the frame etc., complete for finished item of work.					
	Doors D 0.9m x 2.1m	6				
17	Supply of Sal Wood Windows with all necessary fixers including glazing etc. for complete finished item of:					
		12				

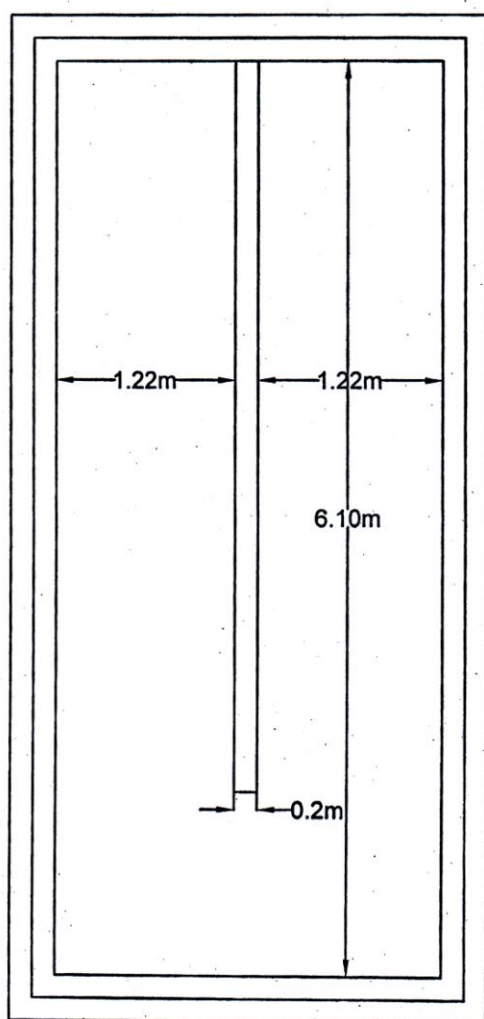
18	Inside Painting to new walls with 2 coats of plastic emulsion paint over a primary coat of white cement of approved brand and shade after thoroughly brushing the surface to remove all dirt and remains of loose powdered materials, including cost and conveyance of all materials to work site and all operational, incidental, labour charges etc. complete for finished item of work as per SS 911 for internal walls					
		1	51.88		3.65	189.36
		1	9.2		3.65	33.58
	Deduction for doors : (-)	2	0.9		2.1	-3.78
						219.16sqm
19	External Painting to new walls with 2 coats of snocem paint Overall primary coat of white cement (making 3 Coats) in all to give an even shade after thoroughly brushing the surface to remove all dirt and remains of loose powdered materials, including cost and conveyance of all materials to work site and all operational, incidental, labour charges etc. complete for finished item of work as per SS 912 for internal walls					
		1	42.68		3.65	155.78
	Deduction for doors : (-)	4	0.9		2.1	-7.56
	Deduction for windows : (-)	12	1.5		1.35	-24.30
	Basement Wall:	1	42.68		0.6	25.61
	Windows:	12	5.7		0.15	10.26
						159.79sqm
20	Enamel Painting with Synthetic Enamel Paint Two coats over a Primary coat of white lead including cost and conveyance of all materials etc complete					
	Windows:	12	1.5		1.35	24.3
	Doors:	6	0.9		2.1	11.34
						35.64sqm
21	Truss					
			15.24	6.1		92.964sqm



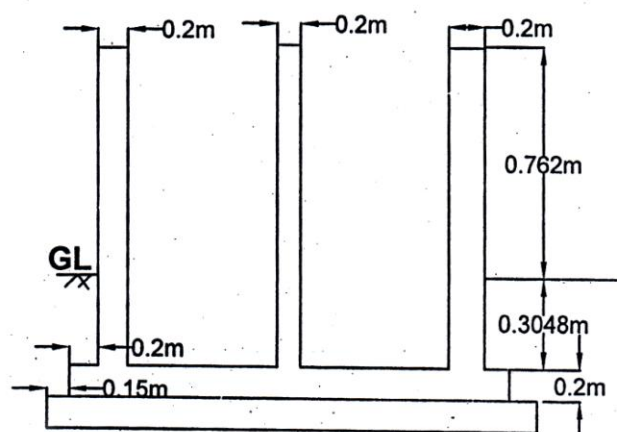
WATER PONDS PLAN



WATER PONDS SECTION



RACE WAY PONDS PLAN



RACE WAY PONDS SECTION

Name of the Work : Water Ponds						
S.No	Description Item	No	L m	B m	D m	Qty
1	Earth work excavation and depositing the soil on banks with an initial lead of 10m and initial lift of 2m in loamy and clay soils like BC soils, red earth and ordinary gravel SS 20B including shoring, strutting, sheeting, planking and dewatering cost of hire charges of T&P labour charges etc. complete for finished item of work for foundation of building (APSS NO.308).	1	3.54	2.01	0.655	4.66 cum
2	Plain Cement Concrete corresponding to M 7.5 grade as per IS 456 equivalent to (1:4:8:) proportion nominal mix (cement: fine aggregate: Coarse aggregate) using 40mm size HBG (SS5) metal from approved quarry with concrete mixture including cost and conveyance of all materials like cement, sand (unscreened), coarse aggregate, water etc. to site, including seignior age charges, sales & other taxes on all materials, all operational, incidental, and labour charges such as mixing, laying and ramming concrete in layers in position not exceeding 15cm, finishing top surface, curing concrete, etc., complete for finished item of work for Foundations and Flooring Bed (APSS No. 402).	1	3.54	2.01	0.15	1.07 cum
3	RCC M- 20 Nominal mix (Cement: fine aggregate: coarse aggregate) corresponding to Table 9 of IS 456 using 20mm size graded machine crushed hard granite metal (coarse aggregate) from approved quarry including cost and conveyance of all materials like cement, fine aggregate (sand) coarse aggregate, water etc., to site and including Seigniorage charges, sales & other taxes on all materials including all operational, incidental and labour charges such as machine mixing, laying concrete, curing etc., complete but excluding cost of steel and its fabrication charges for finished item of work, but					

	excluding centering, shuttering.					
	Bottom slab	1	3.24	1.71	0.20	1.11
	Walls	1	7.51	0.20	1.07	1.61
	Total					2.72 cum
4	Shuttering External	2	2.84		1.07	6.08
		2	1.31		1.07	2.80
	Internal	2	2.44		1.07	5.22
		2	0.91		1.07	1.96
	Bottom slab	2	4.95		0.20	1.98
	Total					18.04 Sq.m
5	Providing high yield strength deformed (HYSD) steel TMT bars (Fe 500 grade), cutting, bending, to required sizes and shapes placing in position with cover blocks and binding wire of 20SWG, forming grills for reinforcement work as per approved designs and drawings including cost and conveyance of bars, binding wire, wastage, tying etc for finished item of work. 110kg/cum					299 kg
6	Plastering 12 mm thick in CM (1:3) including cost and conveyance of all materials and all labour charges etc., complete					
	External	2	2.84		1.07	6.08
		2	1.31		1.07	2.80
	Internal	2	2.44		1.07	5.22
		2	0.91		1.07	1.96
	Bottom	1	2.44		0.91	2.23
	Total					18.29 Sq.m

Name of the Work : Race way Ponds

S.No	Description Item	N o.	L m	B m	D m	Qty
1	Earth work excavation and depositing the soil on banks with an initial lead of 10m and initial lift of 2m in loamy and clay soils like BC soils, red earth and ordinary gravel SS 20B including shoring, strutting, sheeting, planking and dewatering cost of hire charges of T&P labour charges etc. complete for finished item of work for foundation of building (APSS NO.308).	1	7.20	3.74	0.655	17.63 cum
2	Plain Cement Concrete corresponding to M 7.5 grade as per IS 456 equivalent to (1:4:8:) proportion nominal mix (cement: fine aggregate: Coarse aggregate) using 40mm size HBG (SS5) metal from approved quarry with concrete mixture including cost and conveyance of all materials like cement, sand (unscreened), coarse aggregate, water etc. to site, including seignior age charges, sales & other taxes on all materials, all operational, incidental, and labour charges such as mixing, laying and ramming concrete in layers in position not exceeding 15cm, finishing top surface, curing concrete, etc., complete for finished item of work for Foundations and Flooring Bed (APSS No. 402).	1	7.20	3.74	0.15	4.04 cum
3	RCC M- 20 Nominal mix (Cement: fine aggregate: coarse aggregate) corresponding to Table 9 of IS 456 using 20mm size graded machine crushed hard granite metal (coarse aggregate) from approved quarry including cost and conveyance of all materials like cement, fine aggregate (sand) coarse aggregate, water etc., to site and including Seigniorage charges, sales & other taxes on all materials including all operational, incidental and labour charges such as machine mixing, laying concrete, curing etc., complete but excluding cost of steel and its fabrication charges for finished item of work, but					

	excluding centering, shuttering.					
	Bottom slab	1	6.90	3.44	0.20	4.75
	Walls	1	23.16	0.20	1.07	4.93
	Total					9.71 cum
4	Shuttering External	2	6.50		1.07	13.91
		2	3.04		1.07	6.51
	Internal	2	6.10		1.07	13.05
		2	2.64		1.07	5.65
	Bottom slab	2	10.34		0.20	4.14
	Internal wall	2	4.88		1.07	10.44
	Total					53.70 Sq.m
5	Providing high yield strength deformed (HYSD) steel TMT bars (Fe 500 grade), cutting, bending, to required sizes and shapes placing in position with cover blocks and binding wire of 20SWG, forming grills for reinforcement work as per approved designs and drawings including cost and conveyance of bars, binding wire, wastage, tying etc for finished item of work.110kg/cum					1068 kg
6	Plastering 12 mm thick in CM (1:3) including cost and conveyance of all materials and all labour charges etc., complete					
	External	2	6.50		1.07	13.91
		2	3.04		1.07	6.51
	Internal	2	6.10		1.07	13.05
		2	2.64		1.07	5.65
	Bottom	1	6.10		2.64	16.10
	Internal wall	2	4.88		1.07	10.44
	Total					65.66 Sq.m